

# DELUXE STITCHER

C O M P A N Y I N C .

## PARTS LIST

### **Muller Martini HK75V Replacement Stitcher Head**

DB75VHD231/2....Replacement Head...23 Wire  
DB75VHD251/2....Replacement Head...25 Wire  
DB75VHD20241/2...Replacement Head..20x24 Wire

# DB75VHD

Before ordering replacement parts for your DB75V Stitcher Head refer to the following Spare and Wear parts List. Keep this list with the Stitcher head for future reference. If you have any questions, contact your local DeLuxe Stitcher Representative or Distributor.

**AUTHORIZED DEALER:**

# **DELUXE STITCHER**

**COMPANY INC.**

**6635 West Irving Park Road  
Chicago, Illinois 60634-2410 U.S.A.**

**800-634-0810 or 773-777-6500  
Fax: 800-417-9251 or 773-777-0156**

**E-mail: [deluxestitcher@aol.com](mailto:deluxestitcher@aol.com)  
Web: <http://www.deluxestitcher.com>**

# DELUXE STITCHER

C O M P A N Y I N C .

## PARTS LIST

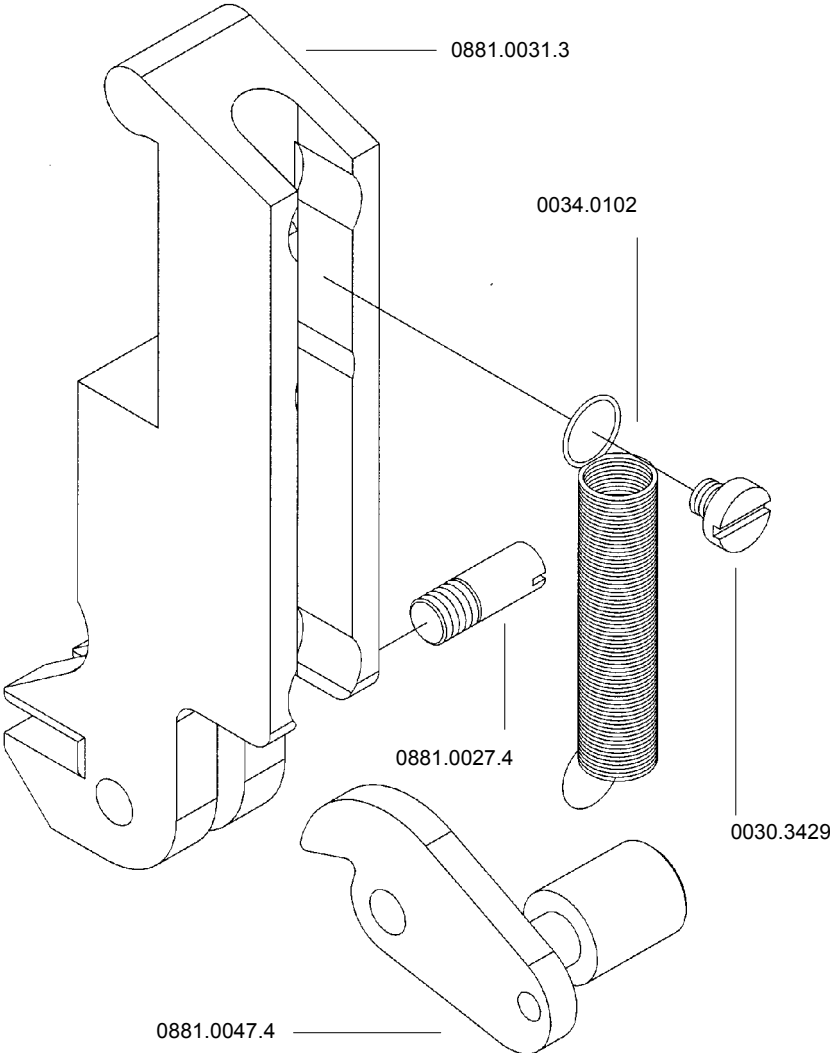
### **Muller Martini HK75V Replacement Stitcher Head**

DB75VHD231/2....Replacement Head...23 Wire  
DB75VHD251/2....Replacement Head...25 Wire  
DB75VHD20241/2...Replacement Head..20x24 Wire

# DB75VHD

Before ordering replacement parts for your DB75V Stitcher Head refer to the following Spare and Wear parts List. Keep this list with the Stitcher head for future reference. If you have any questions, contact your local DeLuxe Stitcher Representative or Distributor.

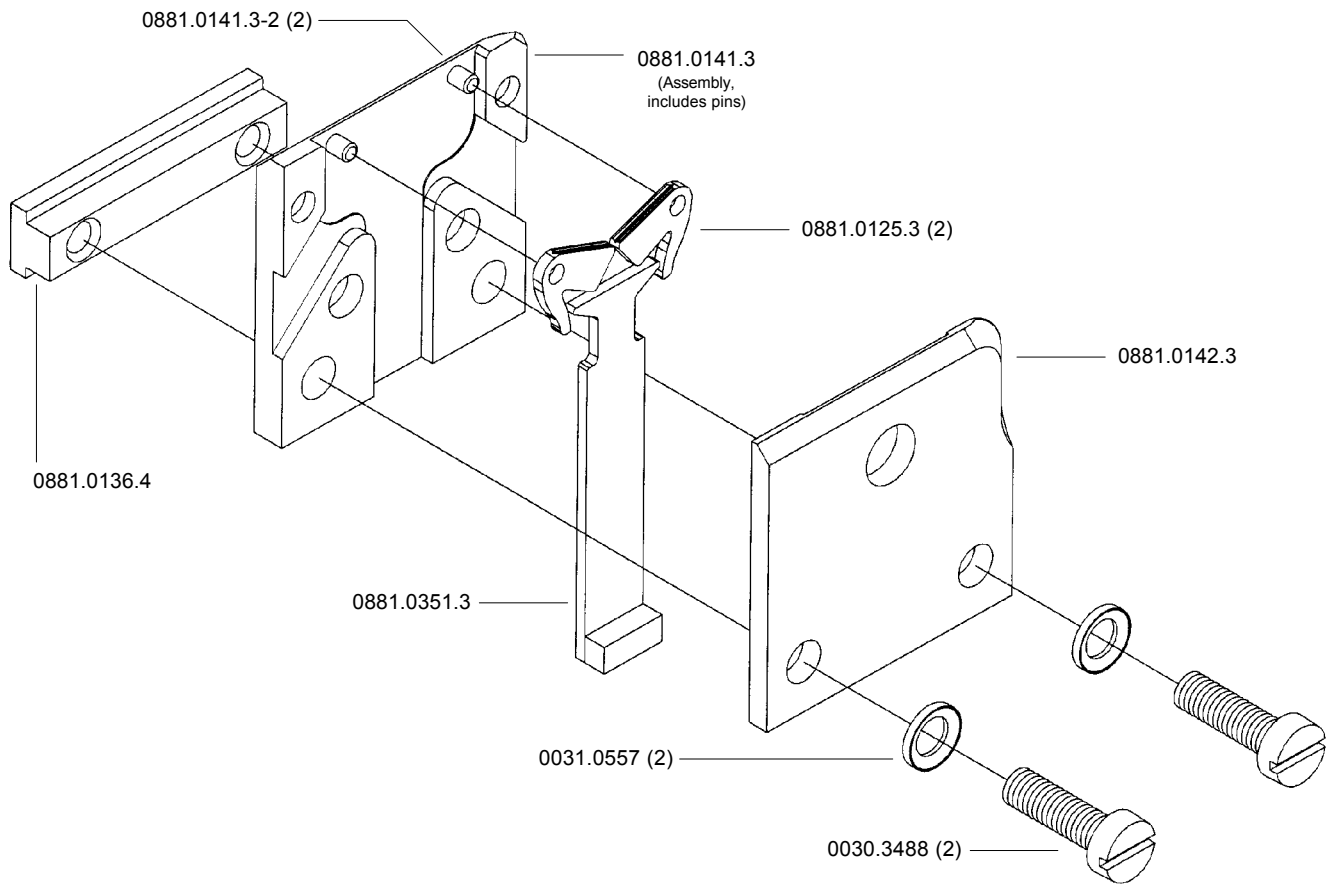
**Wire Holder Assembly - Assembly Part Number 0881.0058.3**



**Wire Holder Assembly - Assembly Part Number 0881.0058.3**

<b>ITEM No.</b>	<b>DESCRIPTION</b>	<b>QUANTITY</b>
0030.3429	Screw, Cheese Head	1
0034.0102	Extension Spring	1
0881.0027.4	Hook Pivot Pin	1
0881.0031.3	Wire Holder	1
0881.0047.4	Wire Holder Hook Assembly	1

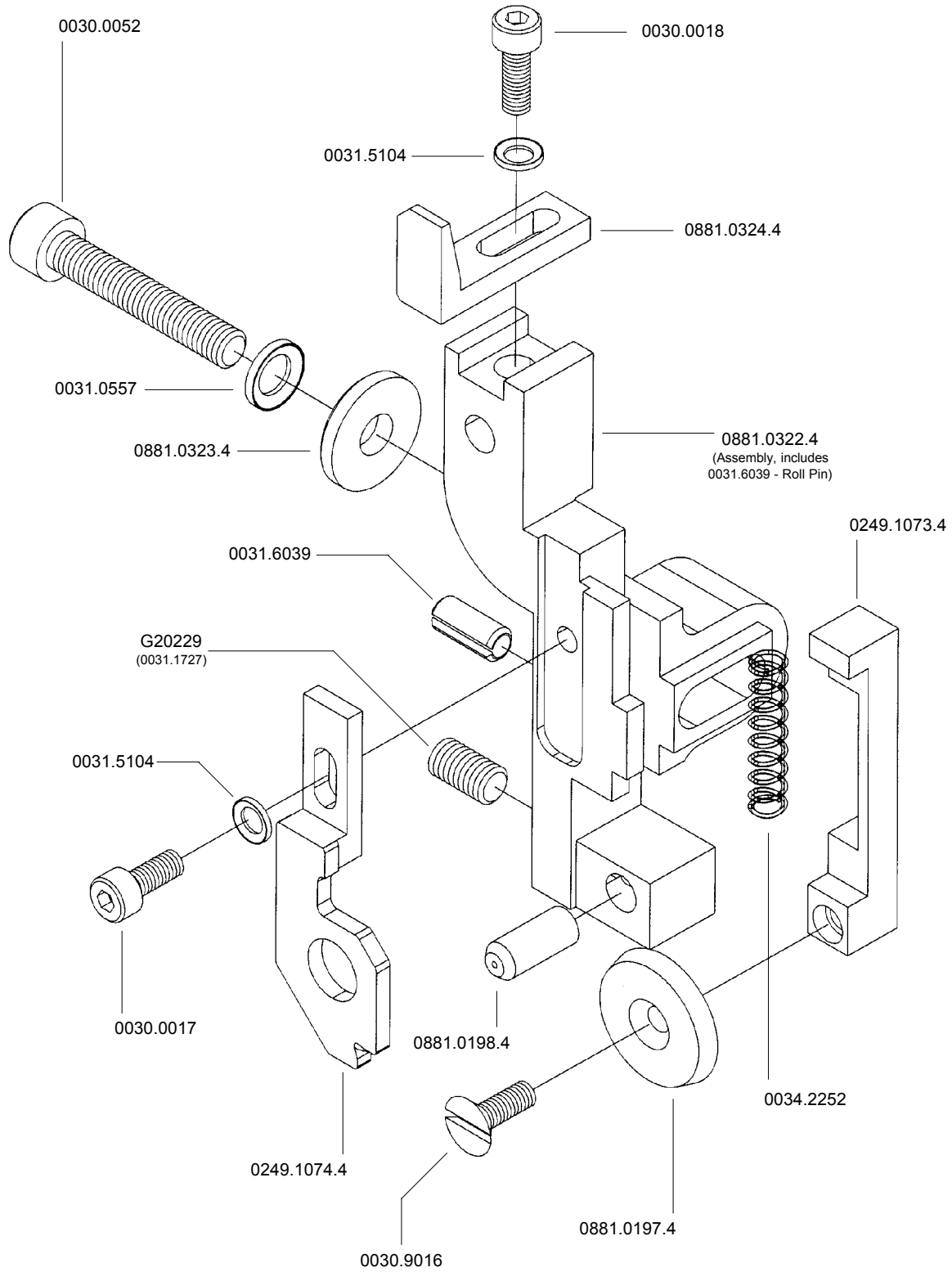
# Clincher Plate Assembly - Assembly Part Number 0881.9050CAR



**Clincher Plate Assembly - Assembly Part Number 0881.9050CAR**

<b>ITEM No.</b>	<b>DESCRIPTION</b>	<b>QUANTITY</b>
0030.3488	Screw M6x1.0x20	2
0031.0557	Lock Washer Ribbed, 6mm	2
0881.0351.3	Clincher Slide (Carbide)	1
0881.0125.3	Clincher Point 1/2"	2
0881.0136.4	Clincher Mounting Bar	1
0881.0141.3	Clincher Back Plate	1
0881.0141.3-2	Clincher Point Pivot	2
0881.0142.3	Clincher Front Plate	1

# Cutter Box Assembly

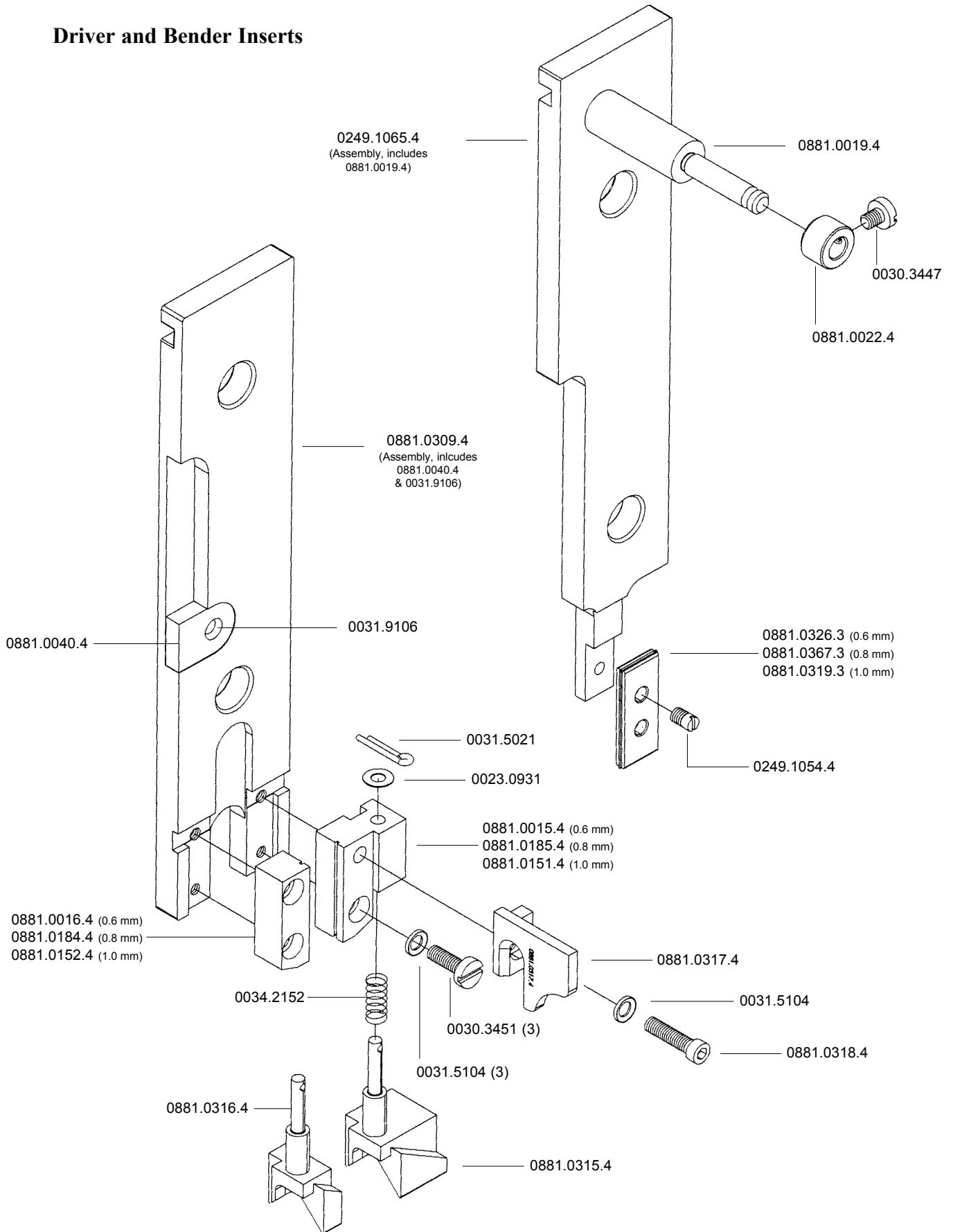




## Cutter Box Assembly

ITEM No.	DESCRIPTION	QUANTITY
G20229	Screw M6x1.0x12	1
0030.0017	Screw M4x0.7x10	1
0030.0018	Screw M4x0.7x12	1
0030.0052	Screw M6x1.0x30	1
0030.9016	Moving Cutter Screw	1
0031.0557	Lock Washer Ribbed, 6mm	1
0031.5104	Lock Washer Ribbed, 4mm	2
0031.6039	Spring Pin	1
0034.2252	Cutter Box Spring	1
0249.1073.4	Cutter Operating Slide	1
0249.1074.4	Wire Straightener Assembly	1
0881.0197.4	Moving Cutter - Carbide	1
0881.0198.4	Fixed Cutter - Carbide	1
0881.0322.4	Cutter Box Assembly	1
0881.0323.4	Washer	1
0881.0324.4	Feed Gear Stop	1

# Driver and Bender Inserts

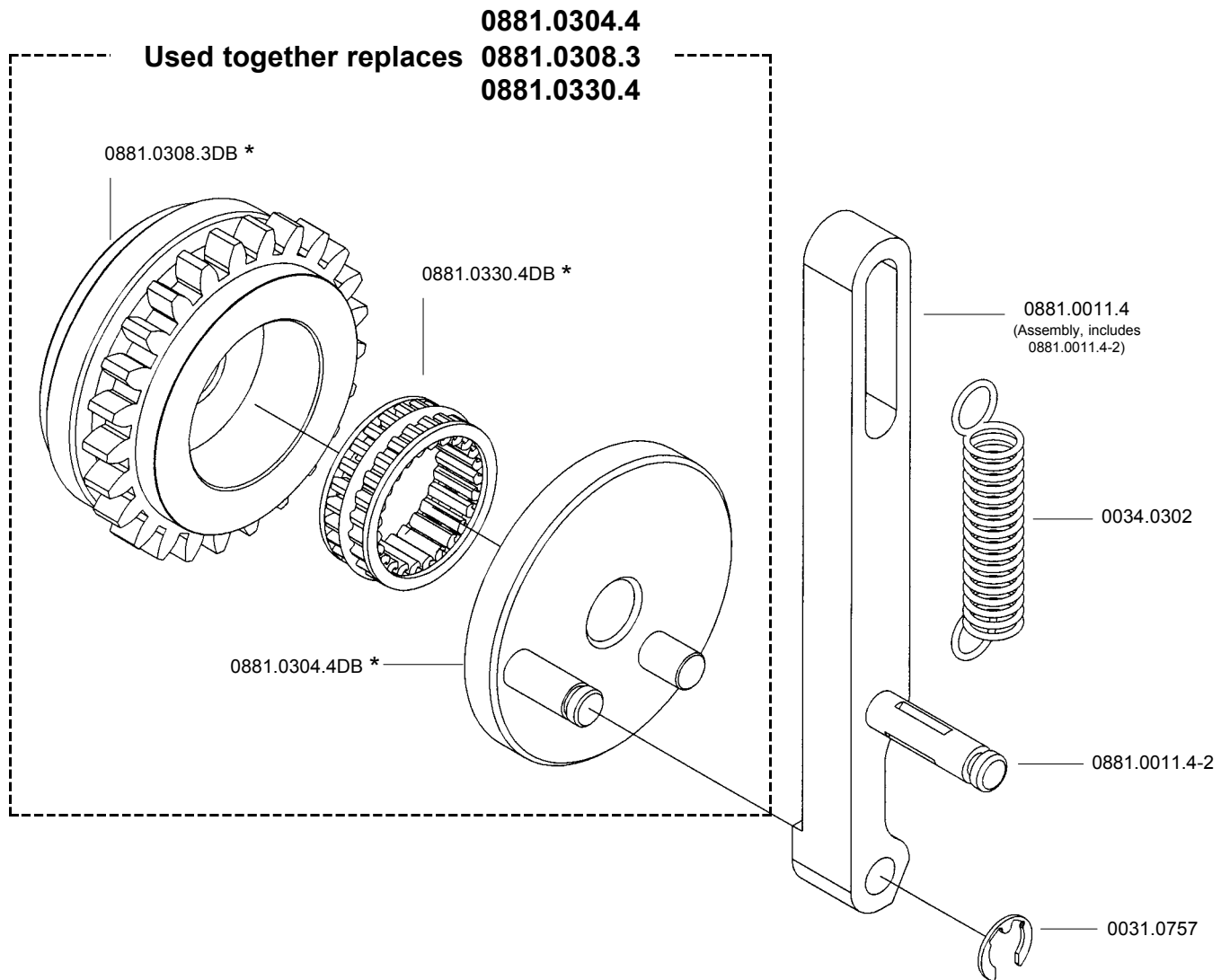


## Drivers and Bender Inserts

ITEM No.	DESCRIPTION	QUANTITY
0023.0931	Shim Ring	1
0030.3447	Screw M4x0.7x5	1
0030.3451	Screw M4x0.7x12	3
0031.5021	Cotter Pin	1
0031.5104	Lock Washer, Ribbed	4
0031.9106	Rivet	1
0034.2152	Center Guide Spring	1
0249.1054.4	Driver Retaining Screw	1
0249.1065.4	Driver Slide Assembly, HK75V	1
0881.0015.4	Former RH 25-28 Wire (0.6mm)	1
0881.0016.4	Former LH 25-28 Wire (0.6mm)	1
0881.0019.4	Driver Slide Shaft	1
0881.0022.4	Set Collar	1
0881.0040.4	Bender Slide Insert	1
0881.0151.4	Former RH 20-24 Wire (1.0mm)	1
0881.0152.4	Former LH 20-24 Wire (1.0mm)	1
0881.0184.4	Former LH 22-24 Wire (0.8mm)	1
0881.0185.4	Former RH 22-24 Wire (0.8mm)	1
0881.0309.4	Bender Slide Assembly, HK75V	1
0881.0315.4	Centering Guide, Wide	1
0881.0316.4	Center Guide, Narrow	1
0881.0317.4	Hook Guide, HK75V	1
0881.0318.4	Allen Head Screw	1
0881.0319.3	Driver 20-24 Wire	1
0881.0326.3	Driver 25-28 Wire	1
0881.0367.3	Driver 22-24 Wire	1

## Feed Gear Assembly

Ask for part number MMKFG2

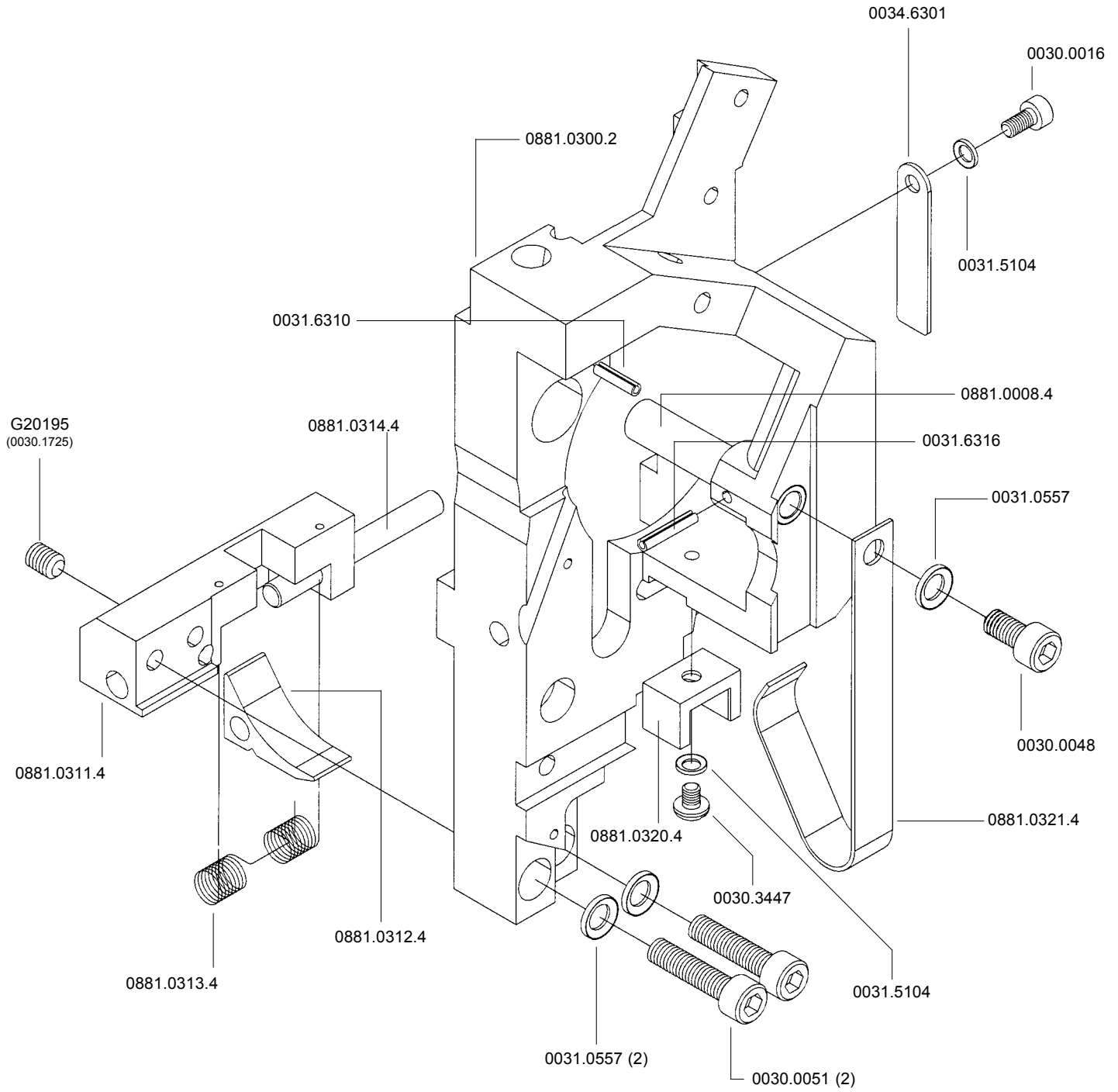


\* Indicates parts that are not interchangeable with Muller-Martini parts.  
All parts used together can be used interchangeably with the Muller-Martini Feed Gear.

## Feed Gear Assembly

ITEM No.	DESCRIPTION	QUANTITY
0031.0757	E-Ring	1
0034.0302	Extension Spring	1
0881.0011.4	Feed Gear Operating Lever Asy	1
0881.0011.4-2	Feed Gear Operating Lever Pin	1
0881.0308.3DB	Feed Gear, Large	1
0881.0330.4DB	Feed Gear Clutch	1
0881.0304.4DB	Feed Gear Pinion Assembly, HK75V	1

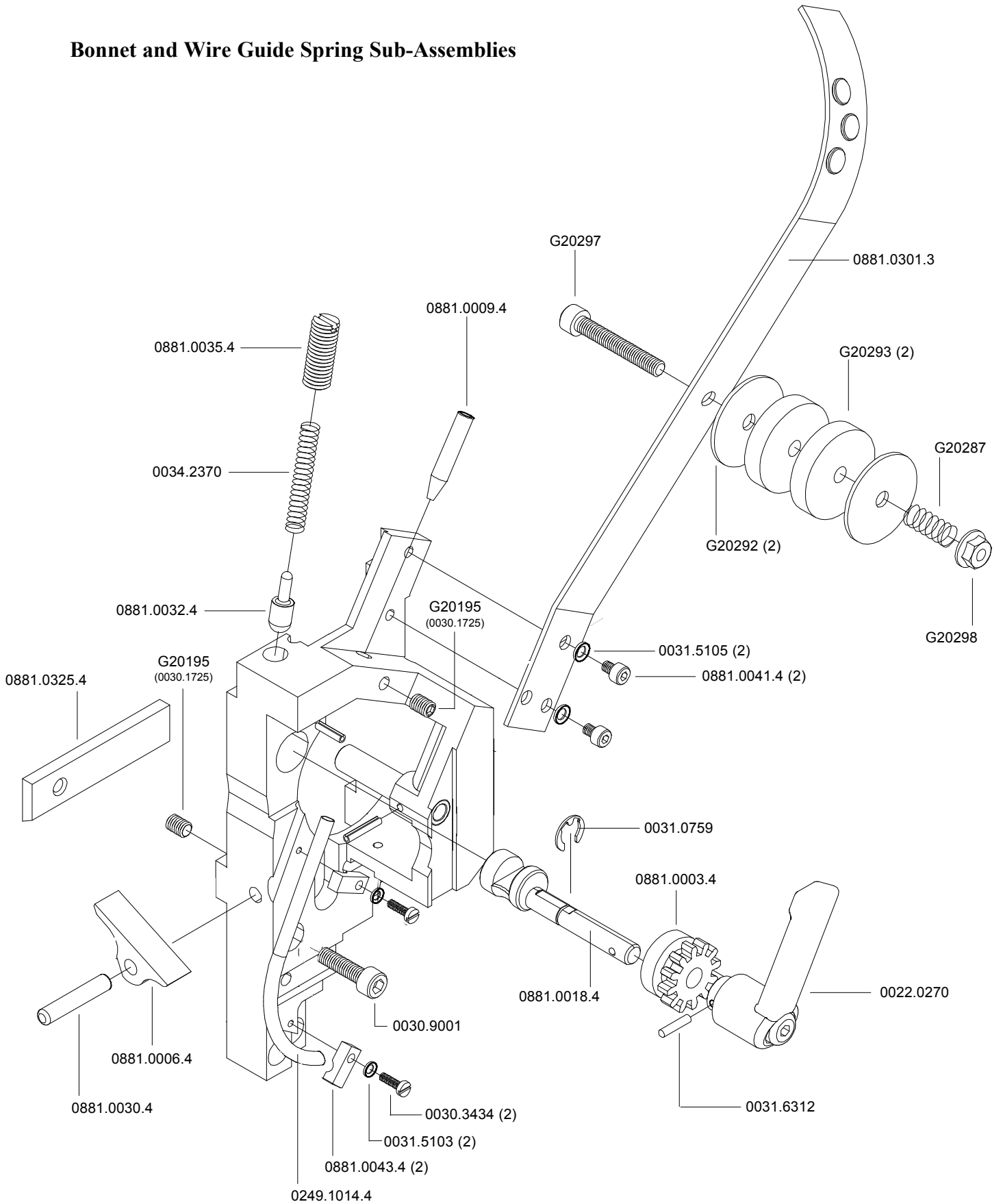
# Bonnet and Supporter Sub-Assemblies



## Bonnet and Supporter Sub-Assemblies

ITEM No.	DESCRIPTION	QUANTITY
0030.0016	Screw M4x0.7x8	1
0030.0048	Screw M6x1x12	1
0030.0051	Screw	2
0030.3447	Screw M4x0.7x5	1
0031.0557	Lock Washer Ribbed	3
0031.5104	Lock Washer Ribbed	2
0031.6310	Spring Pin	1
0031.6316	Spring Pin	1
0034.6301	Friction Strip	1
0881.0008.4	Feed Gear Shaft	1
0881.0300.2	Bonnet, HK75V	1
0881.0311.4	Supporter Block	1
0881.0312.4	Supporter	1
0881.0313.4	Supporter Spring, HK75V	1
0881.0314.4	Dowel Pin	1
0881.0320.4	Wire Holder Guide	1
0881.0321.4	Wire Holder Spring	1
G20195	Screw M6x1x8	1

# Bonnet and Wire Guide Spring Sub-Assemblies





## Bonnet and Wire Guide Spring Sub-Assemblies

ITEM No.	DESCRIPTION	QUANTITY
G20195	Screw M6 x 1 x 8	2
G20287	Wire Oiler Felt Spring	1
G20292	Wire Oiler Felt Washer	2
G20293	Wire Oiler Felt	2
G20297	Screw M6 x 1 x 40	1
G20298	Hex Nut M6 x 1	1
0022.0270	Adjustable Lever	1
0249.1014.4	Lower Wire Tube	1
0030.3434	Screw M3x0.5x10	2
0030.9001	Screw M6x1x22	1
0031.0557	Lock Washer Ribbed, 6mm	1
0031.0759	E-Ring	1
0031.5103	Lock Washer Ribbed	2
0031.5105	Lock Washer	2
0031.6312	Spring Pin	1
0034.2370	Compression Spring	1
0881.0003.4	Feed Gear, Small	1
0881.0006.4	Cutter Operating Lever	1
0881.0009.4	Wire Nozzle	1
0881.0018.4	Feed Release Cam Assembly	1
0881.0030.4	Dowel Pin	1
0881.0032.4	Feed Cam Plunger	1
0881.0035.4	Feed Cam Plunger Bushing	1
0881.0041.4	Screw M5x0.8x5.5	2
0881.0043.4	Wire Tube Clamp	2
0881.0301.3	Wire Guide Spring	1
0881.0325.4	Mounting Strap	1

## Commonly Replaced Wear Parts

ITEM No.	DESCRIPTION	QUANTITY
0249.1073.4	Cutter Operating Slide	1
0030.9016	Moving Cutter Screw	1
0034.6301	Friction Strip	1
0881.0006.4	Cutter Operating Lever	1
0881.0011.4	Feed Gear Operating Lever Assembly	1
0881.0015.4	Former RH 25 - 28 Wire	1
0881.0016.4	Former LH 25 - 28 Wire	1
0881.0031.3	Wire Holder	1
0881.0040.4	Bender Slide Insert	1
0881.0047.4	Wire Holder Hook Assembly	1
0881.0125.3	Clincher Point 1/2"	2
0881.0141.3	Clincher Back Plate	1
0881.0141.3-2	Clincher Point Pivot	1
0881.0142.3	Clincher Front Plate	1
0881.0151.4	Former RH 20 - 24 Wire	1
0881.0152.4	Former LH 20 - 24 Wire	1
0881.0184.4	Former LH 22 - 24 Wire	1
0881.0185.4	Former RH 22 - 24 Wire	1
0881.0197.4	Moving Cutter - Carbide	1
0881.0198.4	Fixed Cutter - Carbide	1
0881.0317.4	Hook Guide, HK75V	1
0881.0319.3	Driver 22 - 24 Wire	1
0881.0321.4	Wire Holder Spring, HK75V	1
0881.0324.4	Feed Gear Stop	1
0881.0326.3	Driver 25 - 28 Wire	1
0881.0351.3	Clincher Slide (Carbide)	1
0881.0367.3	Driver 22 - 24 Wire	1