

OMEGABINDER SPECIFICATIONS

| | UNTRIMMED | TRIMMED |
|------------------------|--|-----------------|
| MAX. SIGNATURE SIZE | 12 1/4" X 14" | 12" X 13 3/4" |
| MIN. SIGNATURE SIZE | 3 5/8" X 5 3/4" | 3 1/2" X 5 3/4" |
| | 3/16" min. lap for gripper. | |
| NUMBER OF STATIONS | 2 stations Min. with multiples of 2 stations. | |
| SPEED | Infinitely variable from 0 to 8500 BPH. Operating speed depends on size, thickness, kind and conditions of stock and other operating conditions. | |
| SIGNATURE FEEDER | Edge feeding with approximate 11" pile capacity. | |
| MAX. THICKNESS OF BOOK | 3/8" compressed. | |
| SIGNATURE OPENERS | Grippers and/or vacuum on inside and outside openers. | |
| DETECTOR | Rotary pack inspector with automatic stop-stitch and rejection of incorrect books. Three consecutive incorrect books stop machine. | |
| GANG STITCHER | Stitches up to 3/16" thickness through crown of book. Two Acme heads furnished. Machine is factory equipped to run (4) four heads. | |
| VACUUM SUPPLY | Lubricated vacuum pump for feeders and signature opening. | |
| SADDLE CHAIN | Crowned chain with removable pusher lugs. | |
| KNIVES | Three cutting and three bed knives; cutting knives are guided by linear bearings (no adjustment necessary). Shear action for cutting. | |
| MAXIMUM TRIM ALLOWANCE | 2" on all 3 sides. | |
| DELIVERY | Variable speed (DC controlled) conveyor. | |
| CHIP REMOVAL | Chip chute standard. | |

CONTROLS

Jog, run and stop located on main control panel and delivery end. Hand remote station provided at feeder end.

POWER REQUIRED

3 H.P. DC Drive Motor
1 1/2 H.P. Motor for vacuum pump.

ELECTRICAL

230 Volts, 3 Phase, 60 Cycle is standard. Alternate 208-3-60 or 460-3-60 and others at extra charge. 21.2 A. 230 V. 3 PH. 60 CY.

FLOOR SPACE

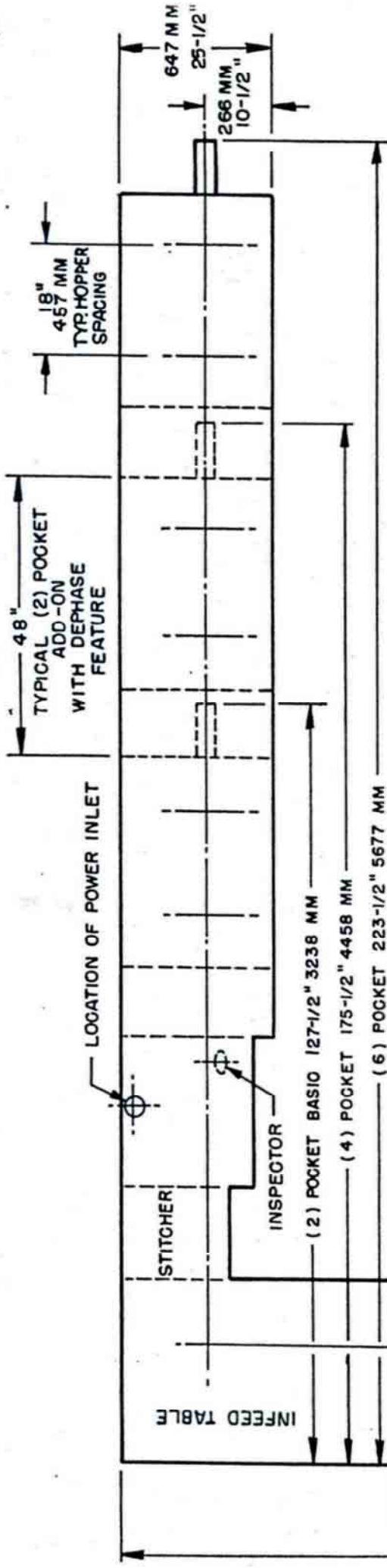
See Floor Plan.

STANDARD EQUIPMENT FURNISHED WITH EACH MACHINE:

Two Acme Stitching Heads
2, 4, 6, or 8 Feeder
Stitcher and Trimmer
Electrical Motor and Controls are Standard
Paper Jogging Platforms
Over and Under Book Inspector
Variable Speed Creeper Belt
Chip Chute

OPTIONAL EQUIPMENT AVAILABLE AT EXTRA CHARGE:

Extra Stitching Heads
Hand Feed Section (provides for two feeding positions at take-up end)
Batch Counter
Extra Set of Knives
Chip Removal System
2 Pocket Dephase System (provides a method of disconnecting pockets that are not being used)



ADD 70-1/2"
 TO OVERALL DIMENSION
 FOR HAND FEED

ADD 6 FT
 FOR COVER FEEDER
 OMEGABINDER FLOOR PLAN